



**Link-Belt**  
C R A N E S

# TEC 500

50-ton (51 mt) Telescopic Crawler Crane

**Off the truck and ready for work!  
Transports in one load with counterweights**

- 115' 6" (35.2m) maximum main boom tip height
- Four section, full power boom
- Remarkable control, reliability & capacity performance
- Simple and dependable hydraulic pilot-operated controls
- Superior jobsite mobility
- Spacious cab with camera monitoring
- Minimal "work at height" maintenance points
- Compact profile for "go anywhere" conditions
- Whisper quiet operation
- Best distributor support network in the world



# TEC 500

50-ton (51mt) Telescopic Crawler Crane

## Remarkable control, reliability and capacity performance

- **Cummins QSB** diesel engine provides compliance for:
  - North America's Tier 4 Final and European Stage 4, or
  - High sulphur fuel regions optional
- Variable displacement piston type main pumps with **total horsepower control**
- List capacities
- Main hoist's powered through piston motors & winch planetary drums grooved for 5/8" | 16mm wire rope with 17,084 lbs (7 749.1 kg) available **line pull**
- 549 fpm (167.5 m/mm) **line speed**
- Mechanical & visual **drum rotation indicators**
- Optional **XL Counterweight** package

## Full power boom with attachment flexibility

- **Full power** 35' 6" ft to 110 ft (10.8 m to 33.6 m) four-section boom
- Two boom extend modes: Exclusive **A-max** mode offers substantially increased capacities in close. **Standard** mode extends all four sections equally.
- **Maximum boom/jib length:** 110 ft + 51' ft (33.6 m + 15.6 m = maximum) total attachment length 161 ft (49.1 m)
- Lightweight **nylon head sheaves** with sealed bearings reduce overall machine weight and increase lift capacities
- **Quick reeve boom head** with quick reeve block allows rope to be easily reeved over boom head
- **Hammerhead boom nose** allows operator to work at high boom angles
- **Fixed work platform** mounting lugs
- **Auxiliary sheave** off main boom
- Optional 28.5 ft to 51 ft (8.7 m to 15.6 m) **two-piece on-board lattice fly** with 2°, 20° and 40° offsets
- Optional **auger-ready** package
- Optional boom mounted 360° remote control **high intensity LED work light**
- Optional 360° House remote **high intensity LED work light**
- Optional **boom tip** work platform
- Optional **boom tip** pole claw

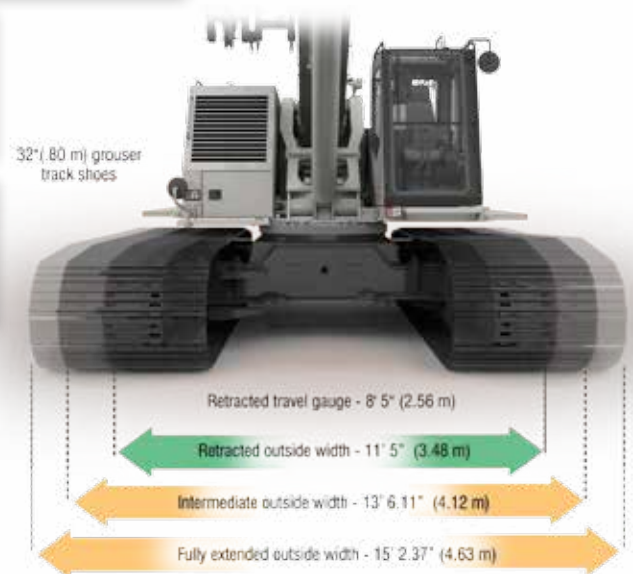


## Link-Belt PULSE

- On-board ground bearing feature
- State of the art rated capacity limiter
- Sliding left side door
- AM/FM radio
- Air conditioner / hot water heater
- Foot throttle pedal
- Travel pedals
- Rear view & winch view camera with color in-cab monitor
- Single axis controls or optional joysticks



Exclusive **A-max** mode offers substantially increased capacities. **Standard** mode self-proportions all four sections equally.



## Quick mobilization & superb job-site mobility

- Transports **COMPLETE IN ONE LOAD UNDER 100,000 LBS (45 MT)**
- **Hydraulic retractable side frames** for transport
- **Fold-up catwalks**
- Fast folding **upper guard rails**
- Optional **hydraulic counter weight removal**

## Link-Belt Preferred

**Comprehensive support for Link-Belt crane owners**

Online site planning tools and a broad based archive of crane manuals provide customers a valuable asset to successfully operate and maintain their Link-Belt Crane. Along with experienced factory technicians, Link-Belt also offers an extensive factory trained distributor network to assist crane owners with everything from general repair to parts delivery.



**Link-Belt**  
CRANES  
Link-Belt Construction Equipment Company  
Lexington, Kentucky | www.linkbelt.com